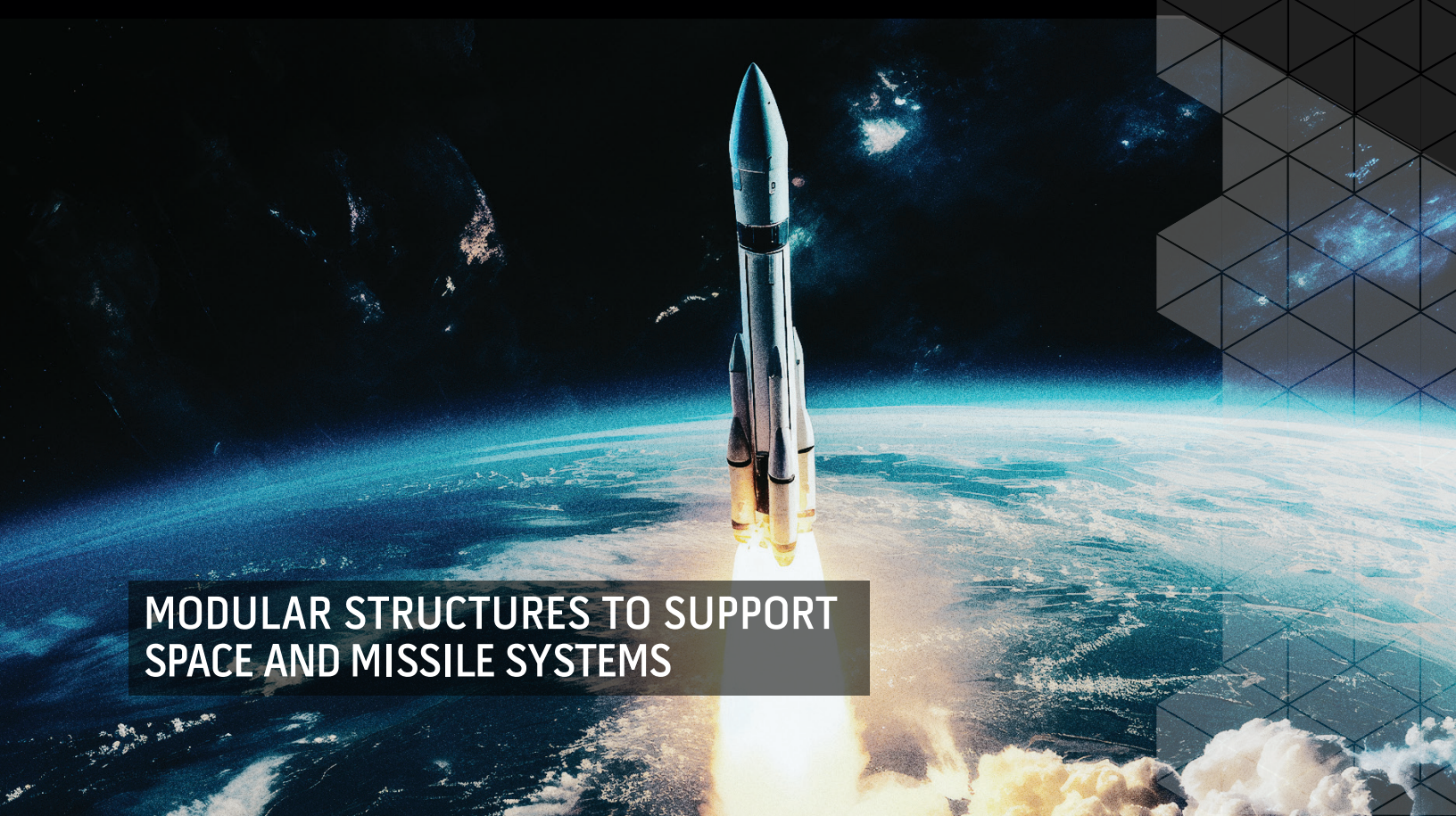


**SPACE AND MISSILE SYSTEMS**



**MODULAR STRUCTURES TO SUPPORT  
SPACE AND MISSILE SYSTEMS**



FEDERAL AND DEFENSE

# SPECIALIZED STRUCTURES FOR SPACE AND MISSILE SYSTEMS

CoverSix works with companies and agencies to design specialized structures that meet the requirements of the space and missile industry. These buildings are meticulously engineered to withstand multiple blast events over many years of use, ensuring they remain safe and secure and continue to meet their industry's needs.



## FUNCTIONALITY AND DELIVERABILITY

Mobile launch vans escort the rocket to the launch site while providing critical communications with onboard systems.



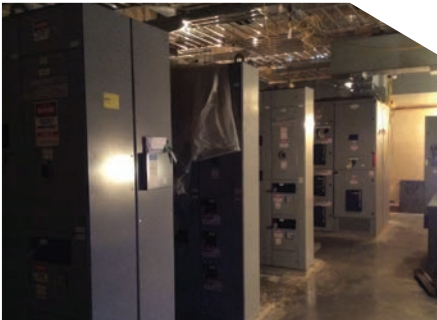
## SAFE AND PROTECTIVE DESIGN

Protective facilities designed to withstand the blast pressures and exhaust chemicals during launch safeguard other assets on the site from damage.



## LAUNCH PAD PROTECTIVE FACILITIES

Protective facilities on the launch pad can increase survivability of the astronauts should something go wrong in the final moments before liftoff.



## INTERIOR OPTIONS

Launch site data centers communicate with the payload right up to the moment of liftoff.



## COMMAND CENTER

Modular command centers protect occupants while providing all critical systems needed for a successful launch.



## FACILITY UNITS

Units can be built to meet U.S. Coast Guard requirements for offshore modules. These units can be deployed on recovery vessels and platforms in the ocean for booster recovery.

## CONTACT AND IDENTIFICATION INFORMATION

855.733.4827	316.440.1800	Wichita, KS, USA
PHONE	FAX	HEADQUARTERS

4LRV6	Z3UMSQNREM96	GS07F0761X	332311.263220.332439
CAGE	UNIQUE IDENTITY ID	GSA CONTRACT	SMALL BUSINESS

CONTACT US

ONLINE | [COVERSIX.COM](https://COVERSIX.COM)

TOLL-FREE | 855.733.4827

EMAIL | [SALES@COVERSIX.COM](mailto:SALES@COVERSIX.COM)

CoverSix, a division of RedGuard, provides customizable, scalable modular buildings for the specialized needs of the federal government, military and security industries. The industry leader in hardened structures for protection from ballistics, blast and forced entry.

